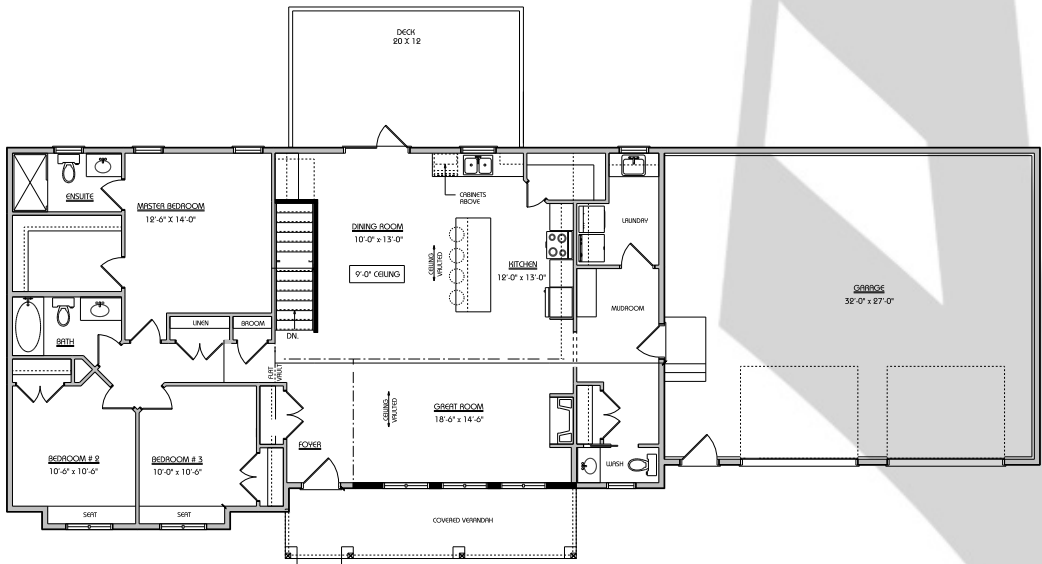
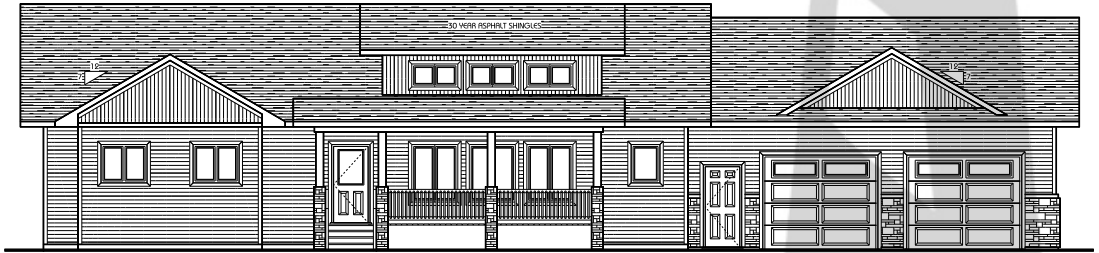


THE MONTARA

1696 SQFT

- 1696 SQ FT
- 3 Bedroom
- 2 1/2 Bath
- Oversized 2 Car Garage
- Large Kitchen with Island
- Large Living Room with Tall Vaulted Ceiling to shed dormer windows



BEACON  HOMES

Bringing You Home

Tel: 587-679-7577

www.builtbybeacon.com info@builtbybeacon.com