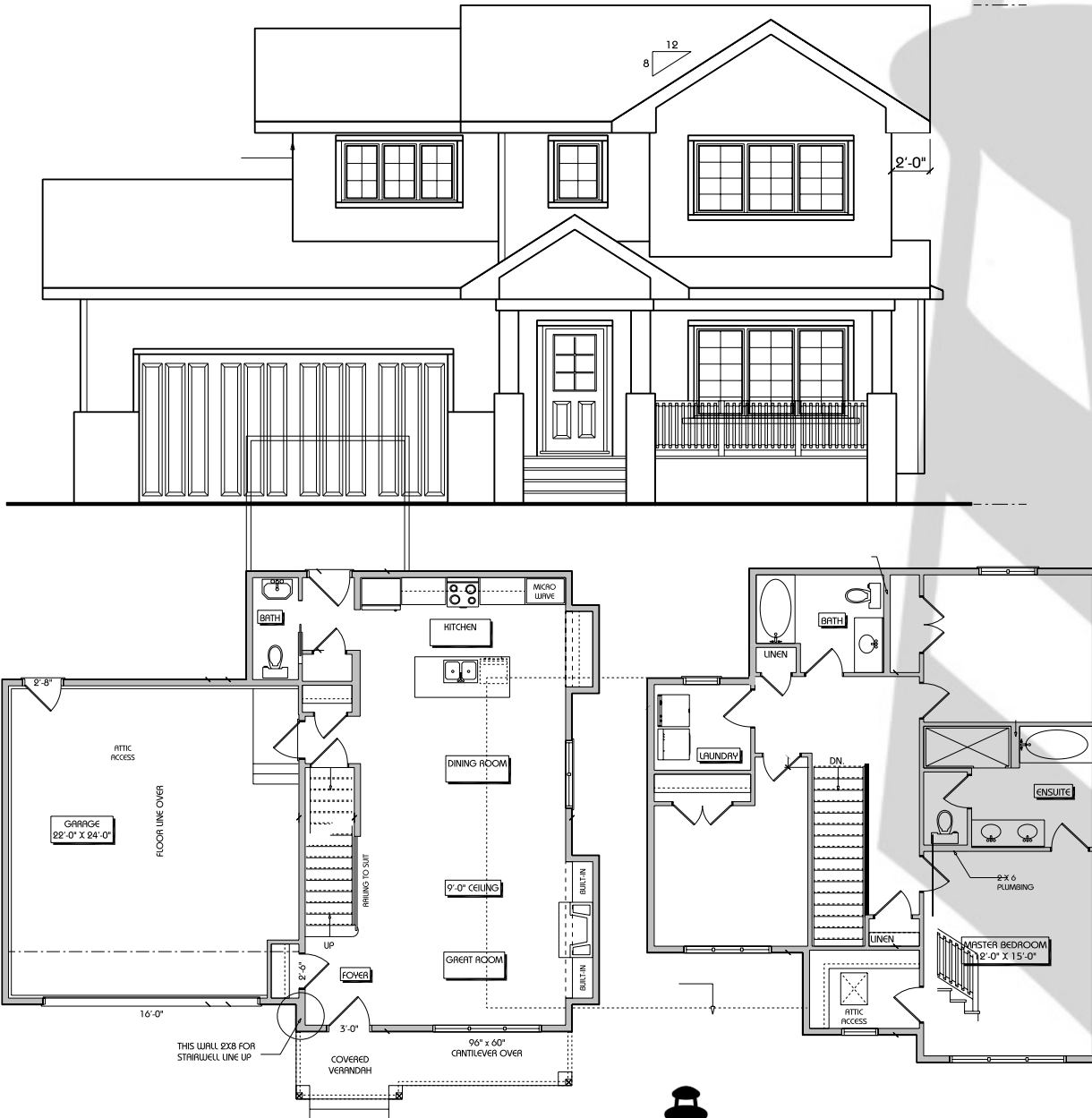


THE TRAPANI

1710 SQ. FT.

- 1710 SQ FT
- EnerGuide Rated
- 3 Bedrooms
- 2 1/2 Bathrooms
- 2 Car Garage
- Large Kitchen with Island
- Quartz countertops throughout
- 9' Ceilings on main floor
- Ensuite complete with Shower, and His & Her Sinks
- Triple Pane Windows
- Gas Fireplace
- Solar Ready



BEACON



HOMES

Bringing You Home

Tel: 587-679-7577

www.builtbybeacon.com

info@builtbybeacon.com